

COMUNE DI
(Provincia di

PROGETTO ESECUTIVO

INTERVENTI DI MITIGAZIONE E DI RIDUZIONE DEL RISCHIO FRANA IN LOCALITA'

ESECUTIVI DELLE STRUTTURE IN CEMENTO ARMATO E PARTICOLARI COSTRUTTIVI

Scala 1:50

PROGETTISTA: G. L. L.
Ing. Giuseppe Malatesta

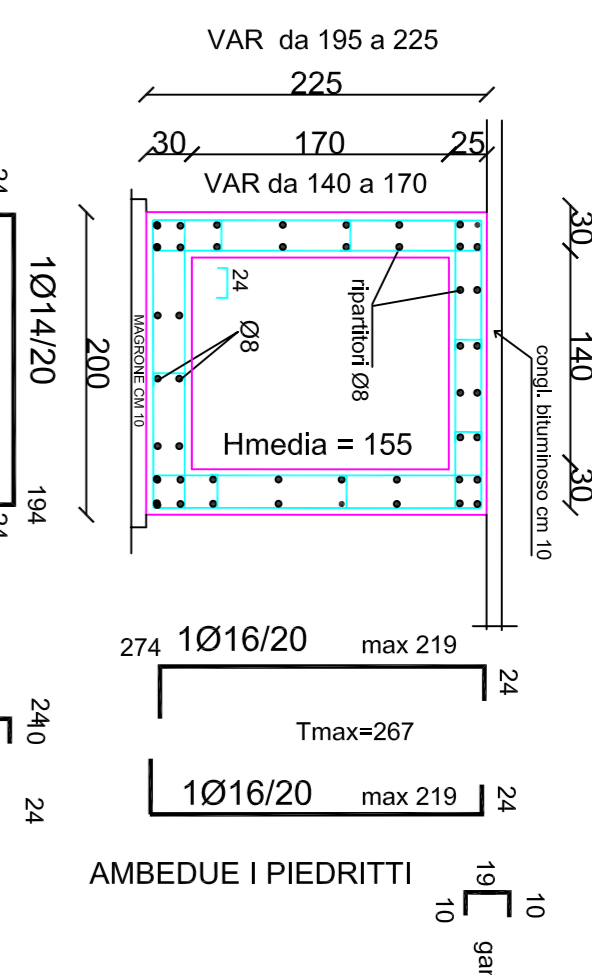
IL RESPONSABILE DEL PROCEDIMENTO

TAV. N°

TOMBINO SCATOLARE

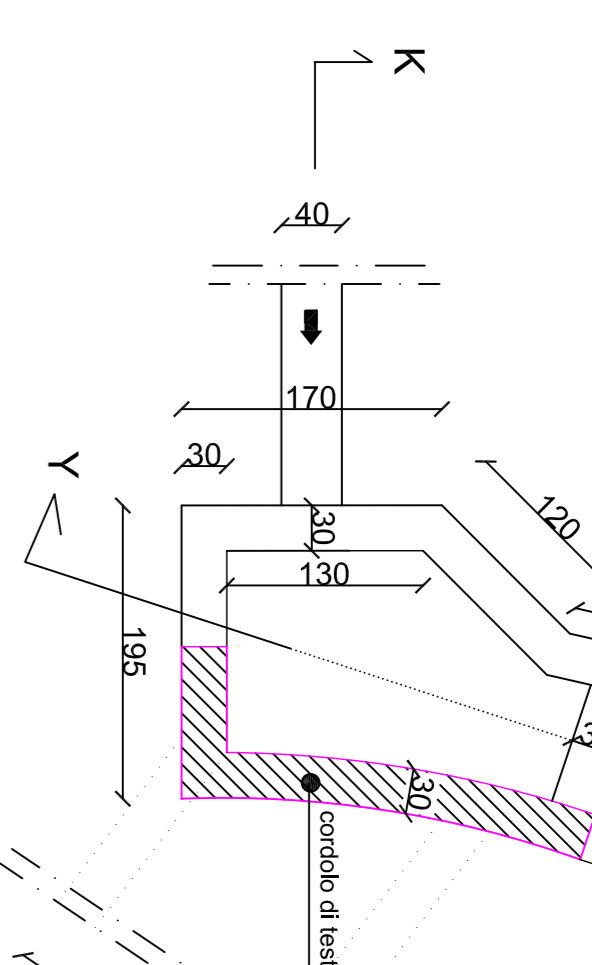
CARPENTERIA ED ARMATURA - (rif. Tav. N°14)

**CALCESTRUZZO d. esp. XC2 - cl. res. C25/30
ARMATURA: ACCIAIO B490C**



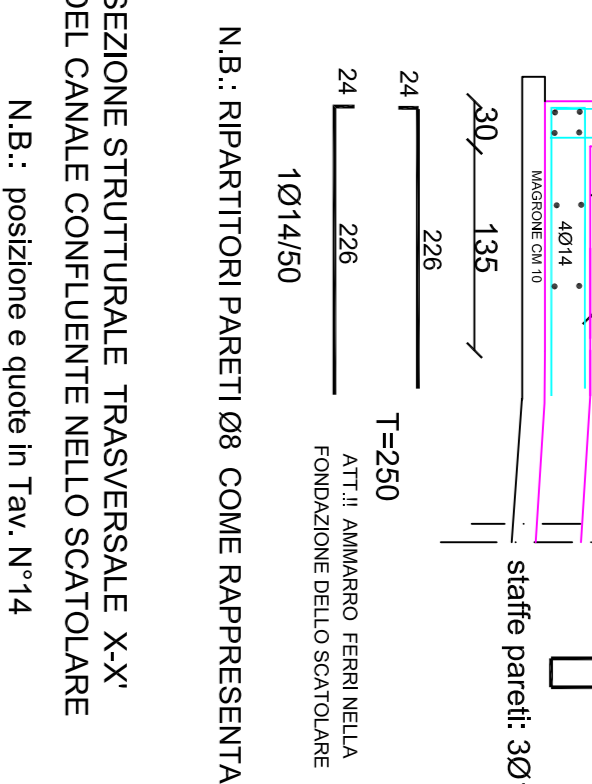
PANTOFI POZZETTO IN TESTA ALLO SCATOLARE

N.B.: posizione e quote in Tav. N°14

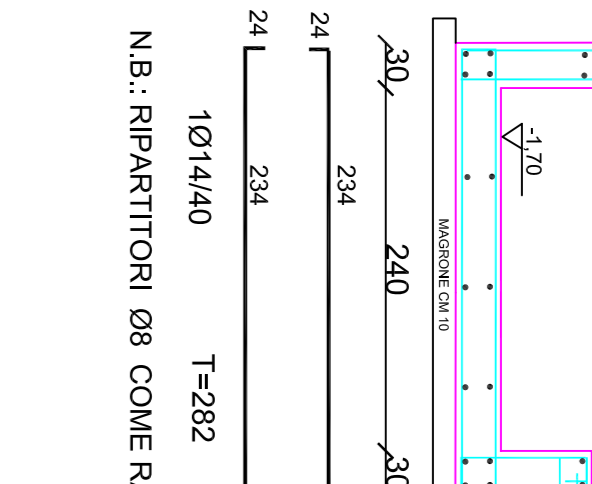


SEZIONE STRUTTURALE K-K

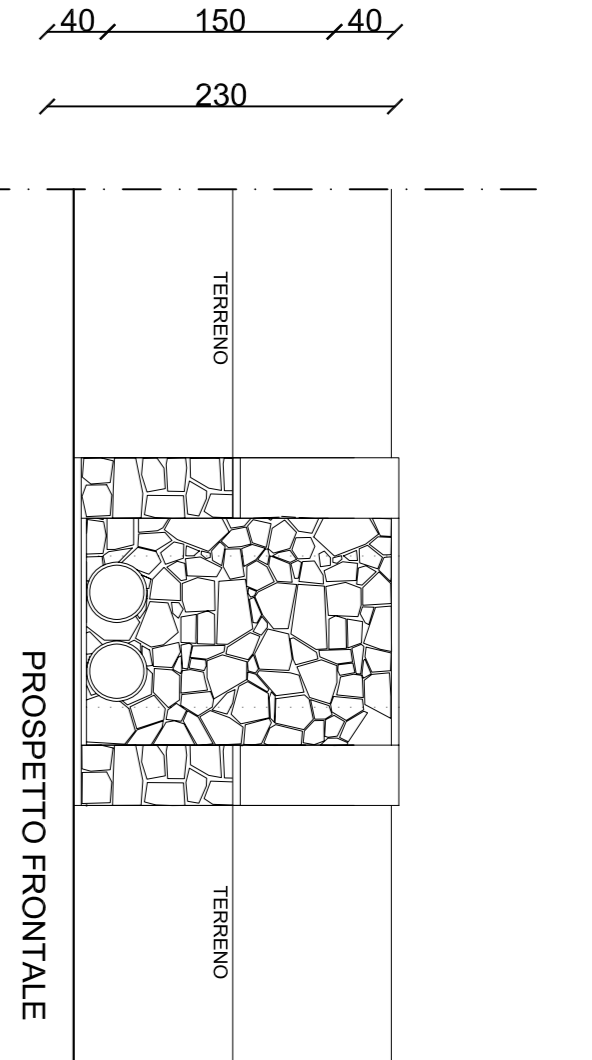
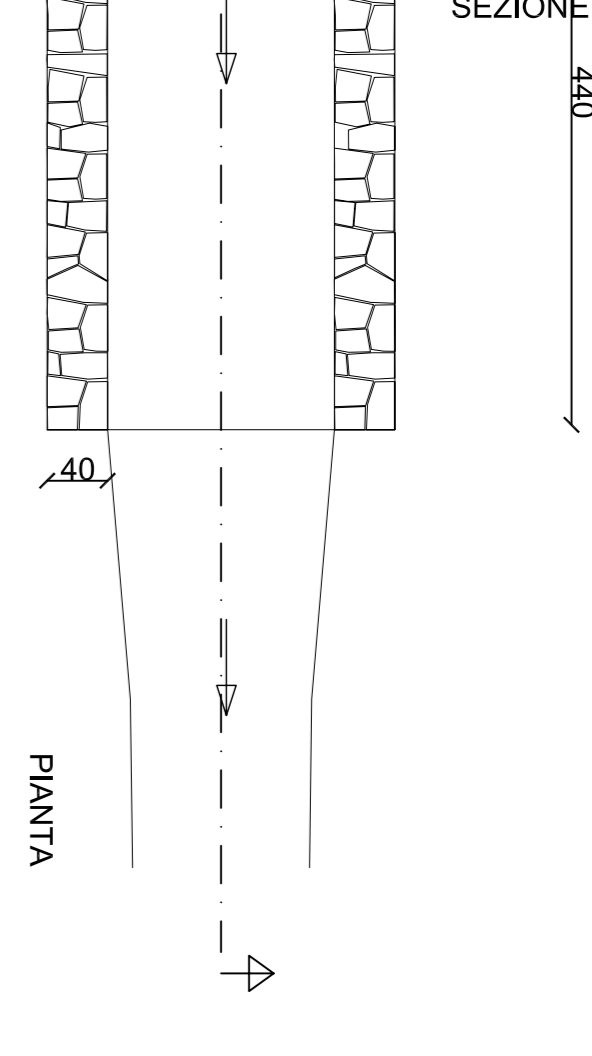
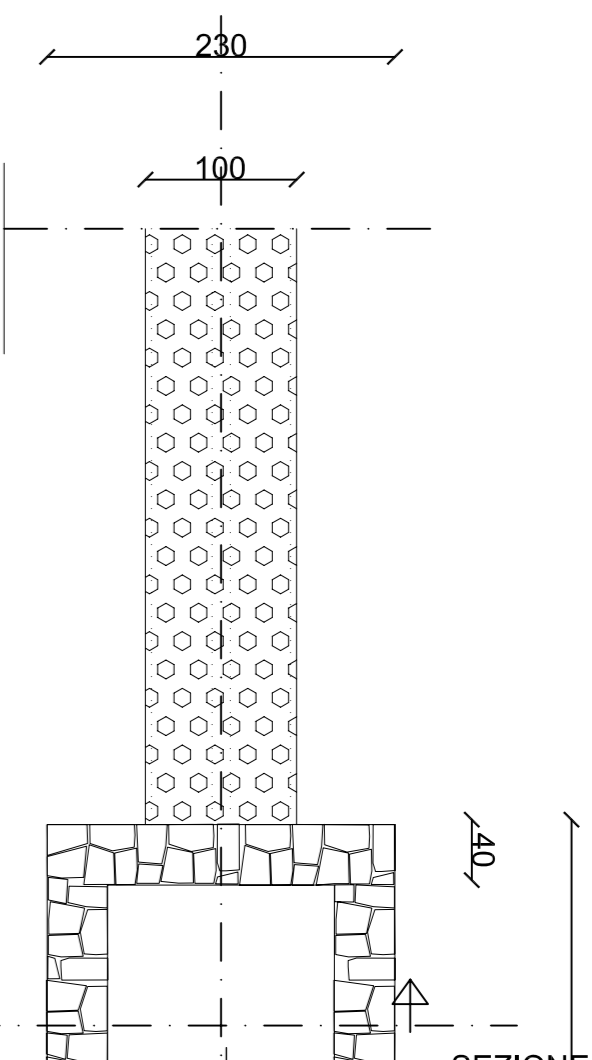
salite condotte: 308/80



SEZIONE STRUTTURALE V-V'

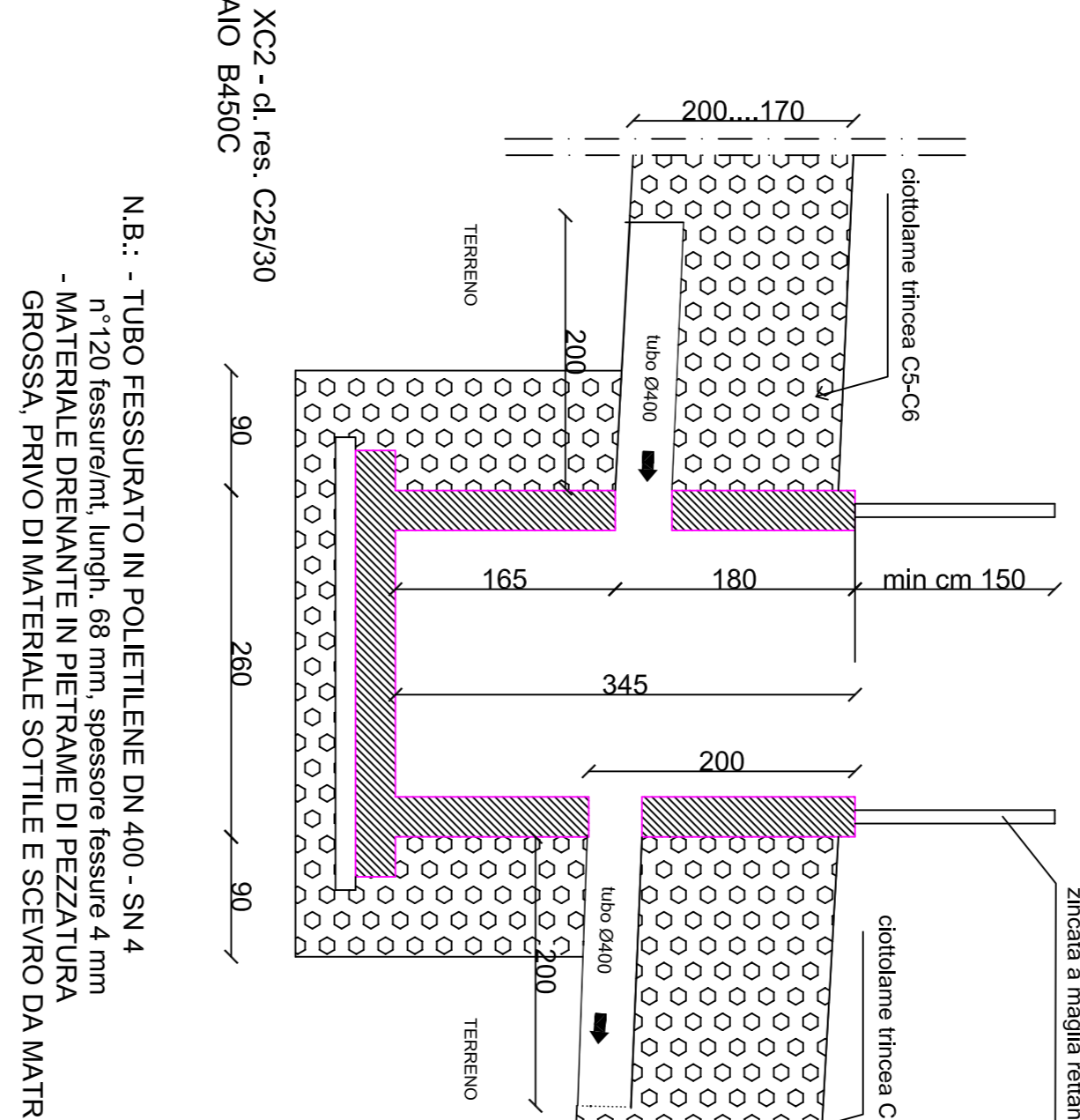
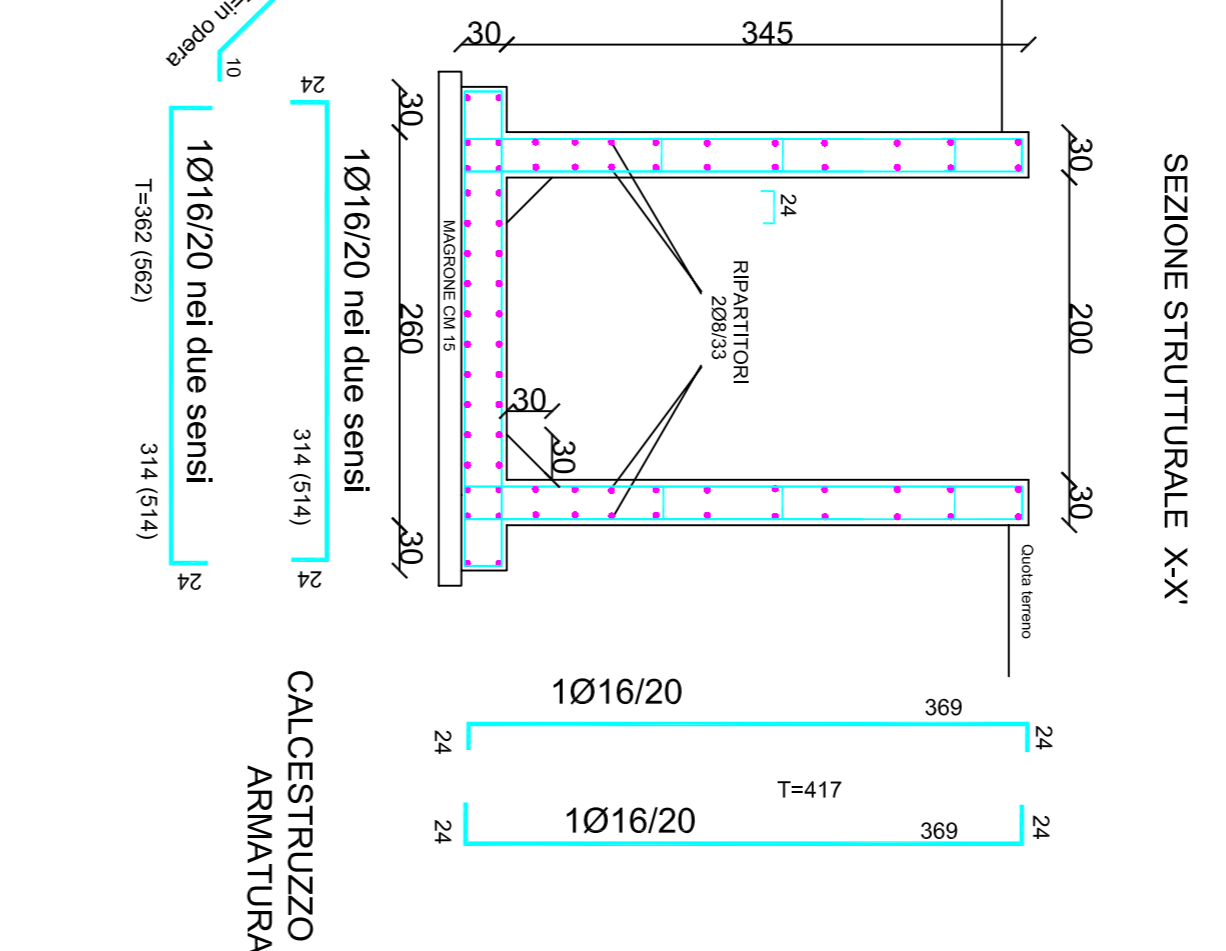
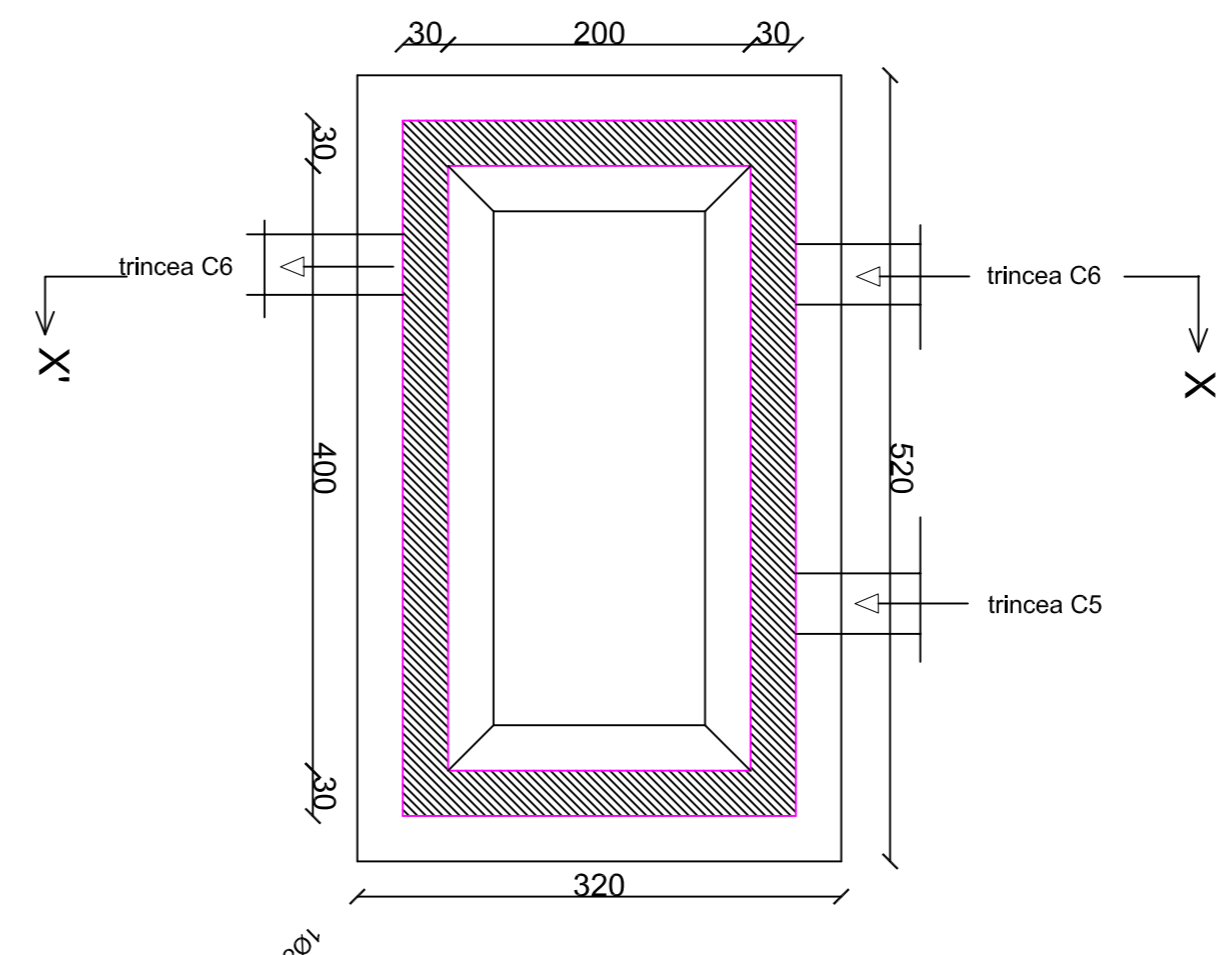


CANALE RICEITTORE DI VALLE - sc. 1:50 (rif. Tav. N°8)



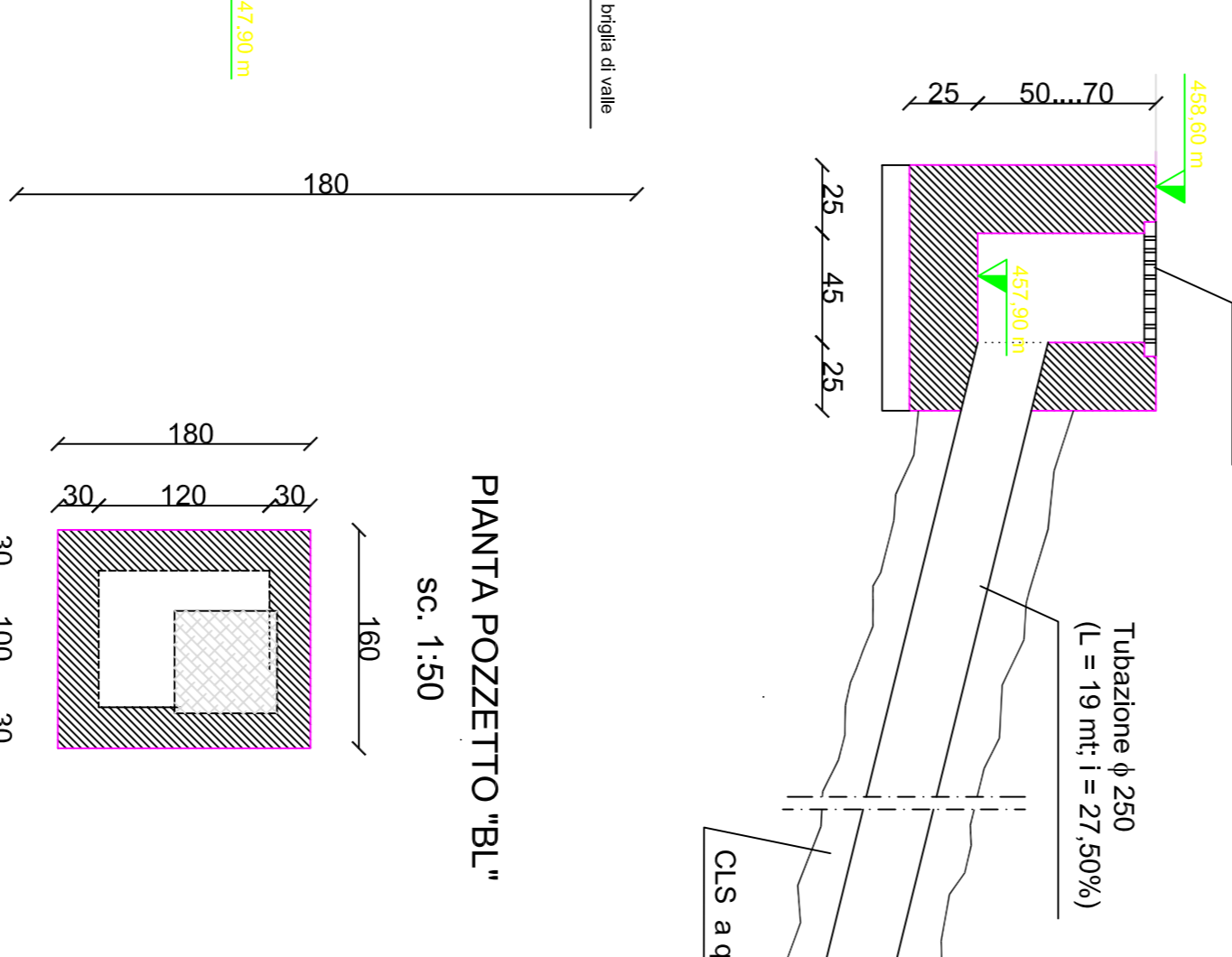
VASCA DI CALMA

(rif. Tav. N°9)

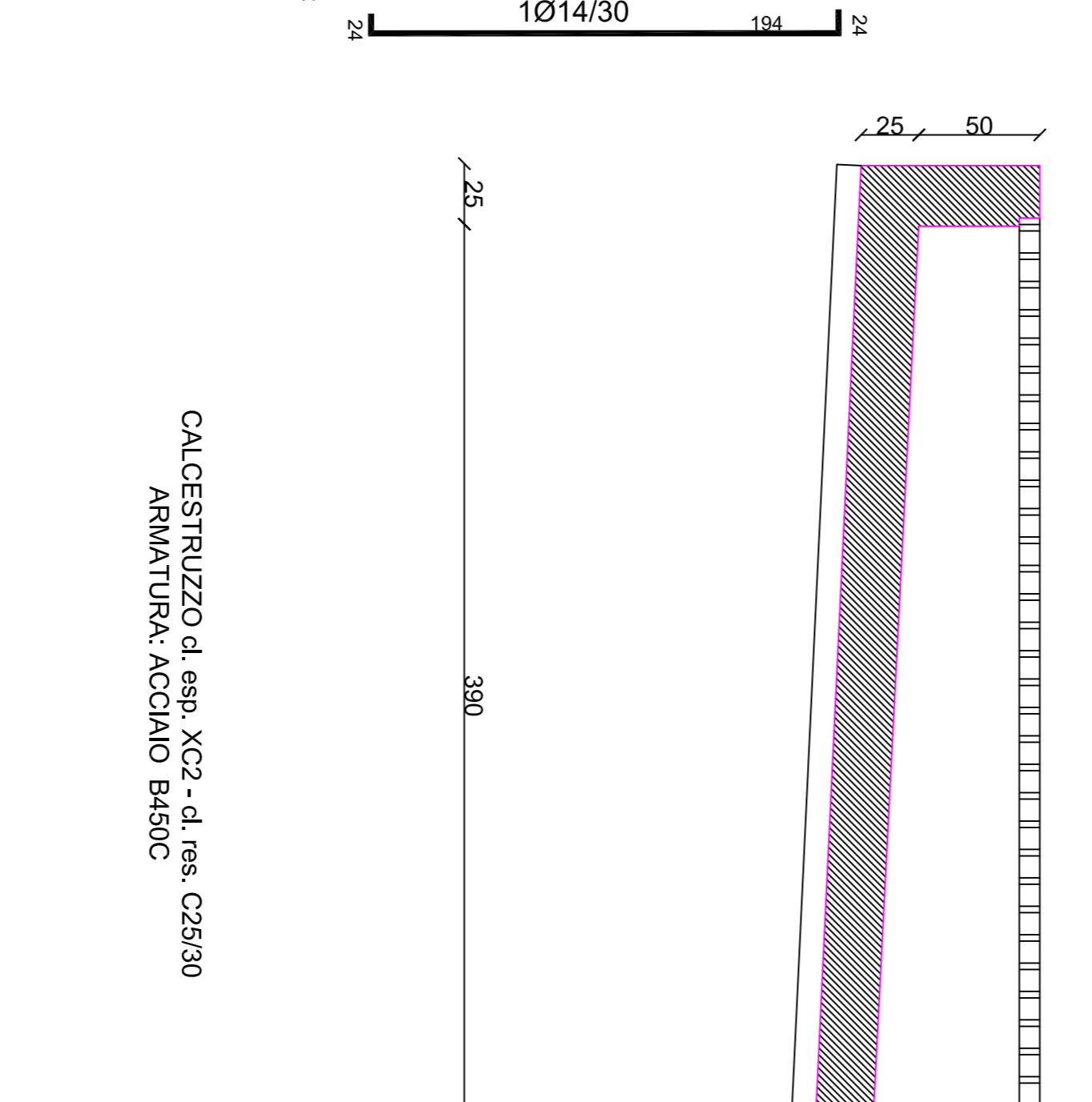


AREA ZAMPA DELL'ORSO - particolari sc. 1:25 (rif. planimetria di Tav. N°11)

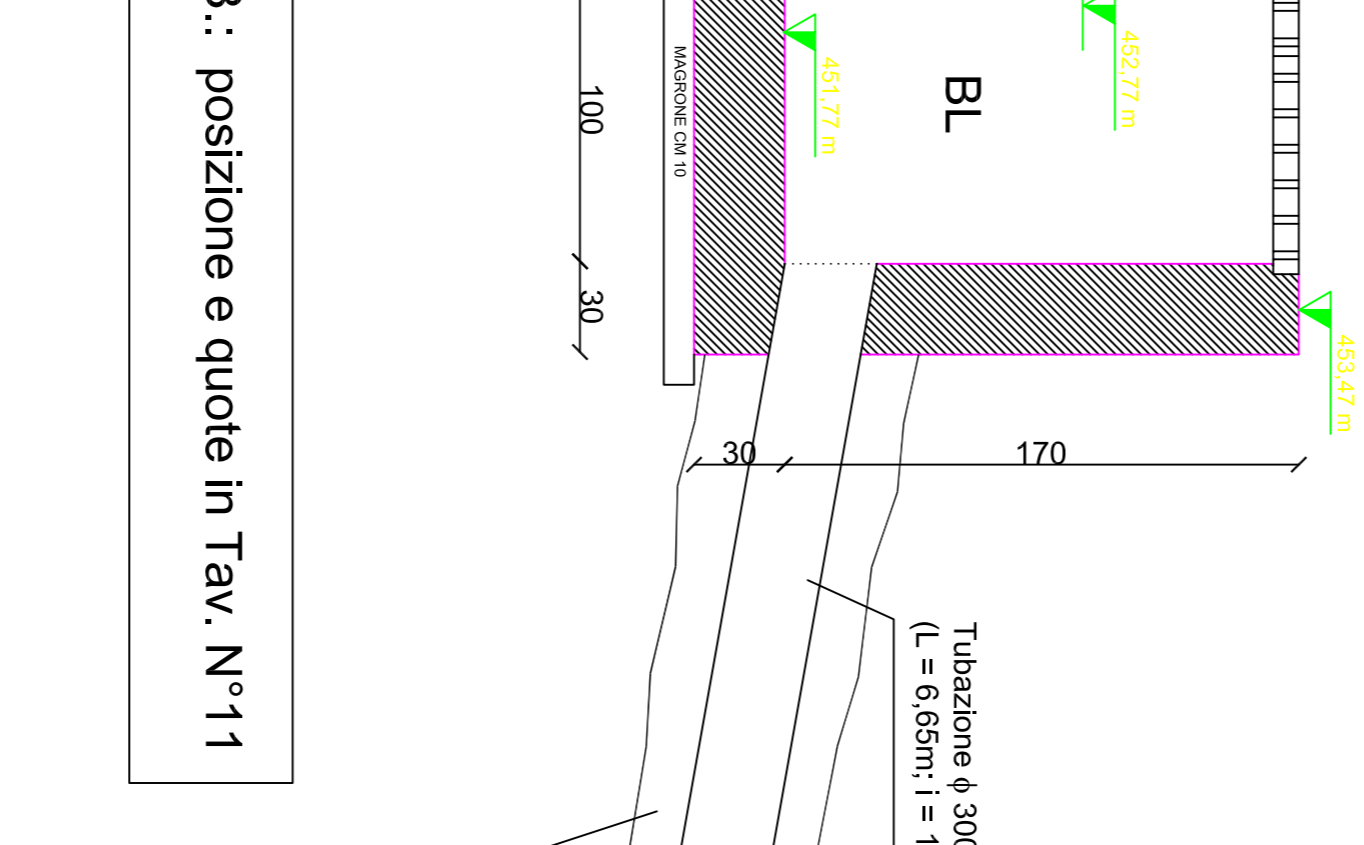
SEZIONE G3 - BL



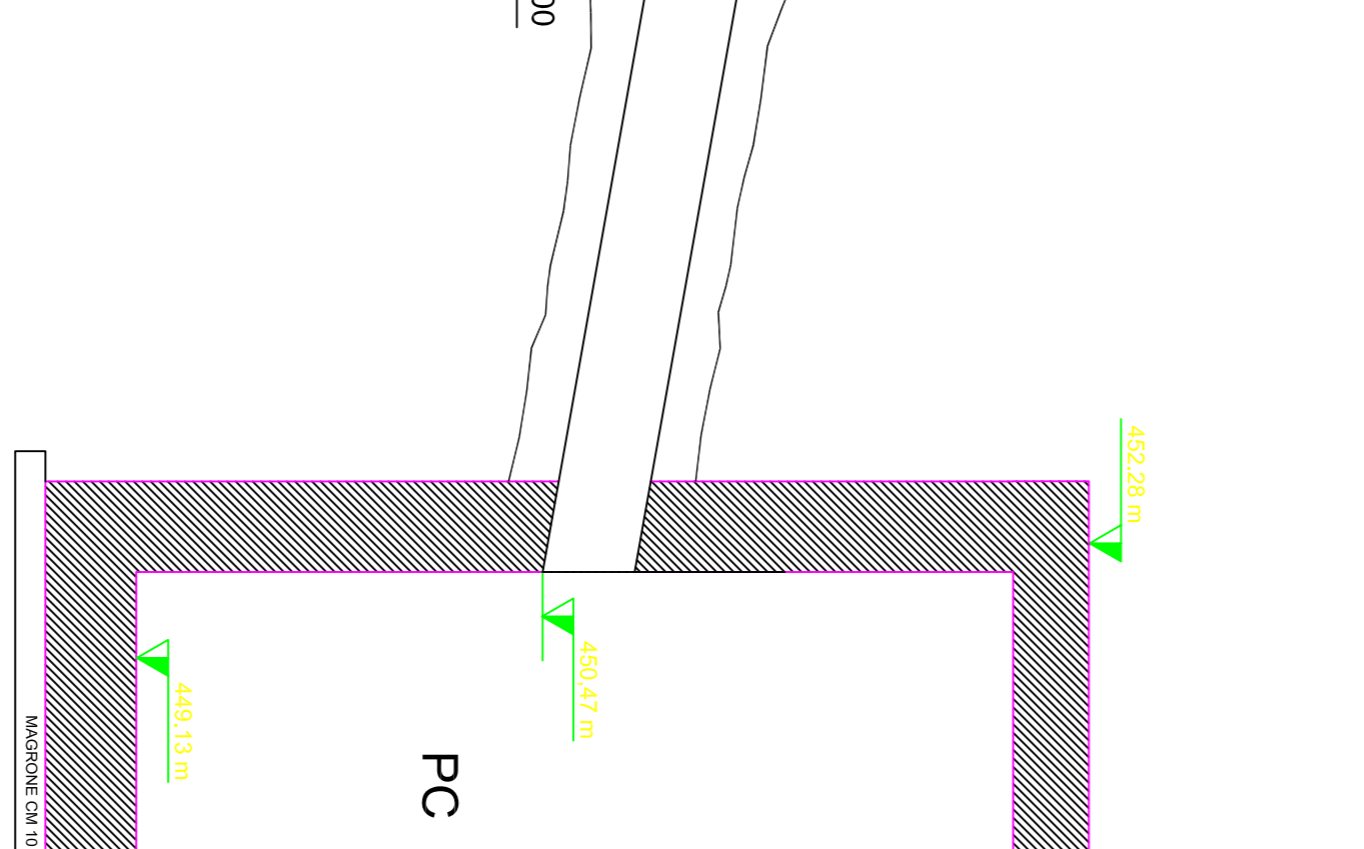
SEZIONE G2 - BL-PC



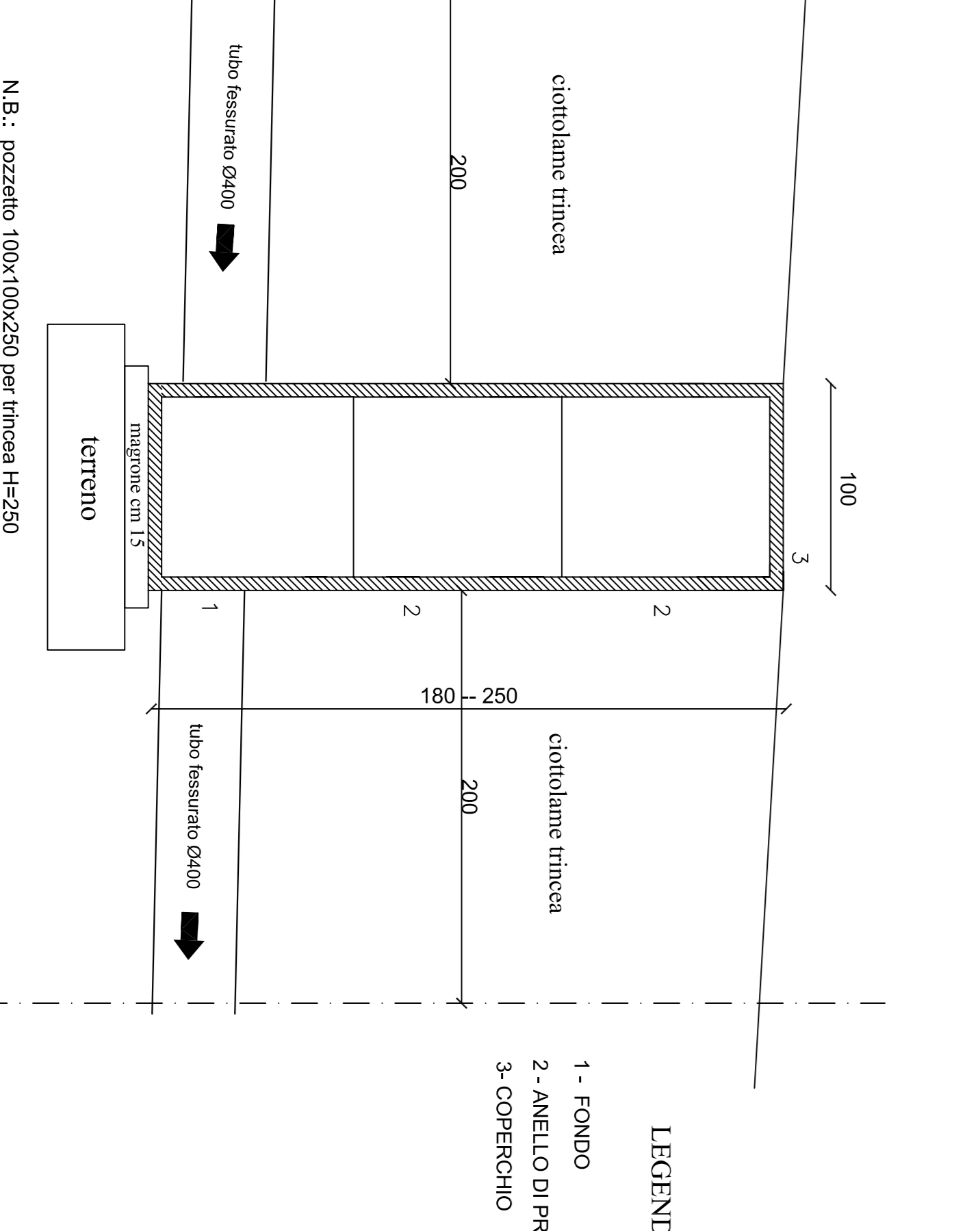
SEZIONE G4 - PC



SEZIONE G1 - PC

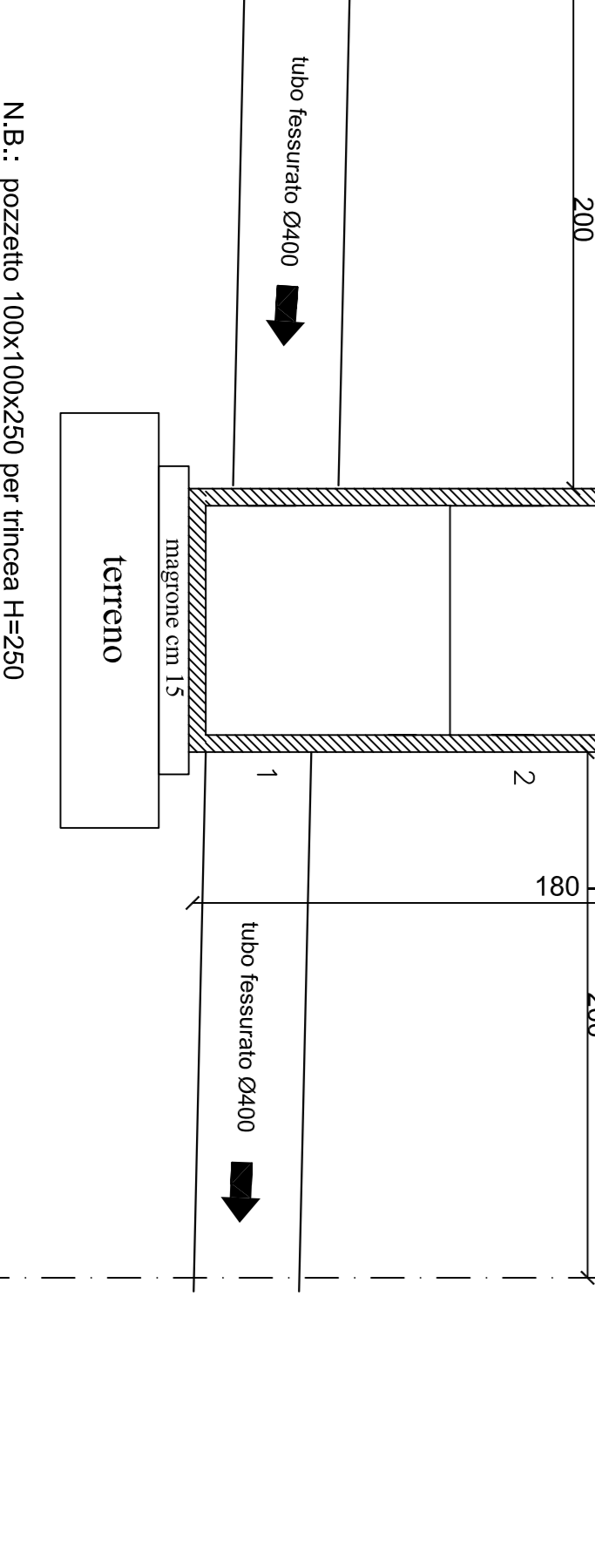


SEZIONE POZZETTO PREFABBRICATO TIPO DA DISPORRE LUNGO LE TRINCEE - sc. 1:25 - (rif. Tav. N°8)



LEGENDA

- 1 - FONDO
- 2 - ANELLO DI PROLUNGA
- 3 - COPRIFONDO



N.B.: pozzetto 100x100x250 per trincea H=250
pozzetto 100x100x200 per trincea H=200
pozzetto Ø60xH=150 per trincea H=120

